

# Leica CloudWorx for BricsCAD

## Point cloud plug-in software



### Simple collaboration

When paired with JetStream, Leica CloudWorx for BricsCAD allows users across the office or around the world to collaborate on a project seamlessly. Access saved clips and limit boxes and sync versions to prevent redundant, outdated copies of data from causing confusion and inefficiency.



### Seamless integration

CloudWorx is integrated seamlessly with BricsCAD to shorten the learning curve for working with point cloud data. Access all the added features of CloudWorx along with the native tools in BricsCAD. Simply load a Cyclone or JetStream project or LGS file\* and instantly begin working with all your points in BricsCAD.



### InterCAD workflows

CloudWorx users benefit from seamless project access between all CloudWorx product plug-ins. Work with CloudWorx project files saved from any plug-in to easily switch between programs and access features unique to each software.

[leica-geosystems.com](http://leica-geosystems.com)



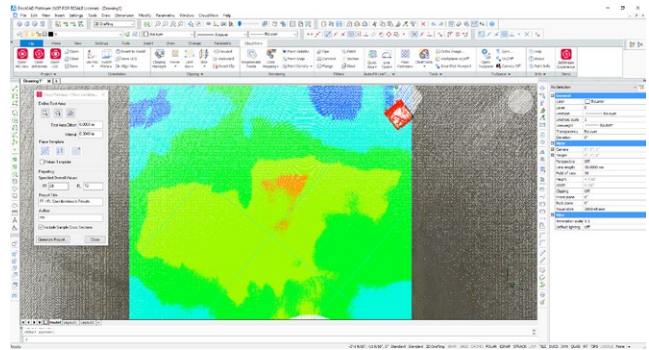
- when it has to be **right**

**Leica**  
Geosystems

PART OF  
**HEXAGON**

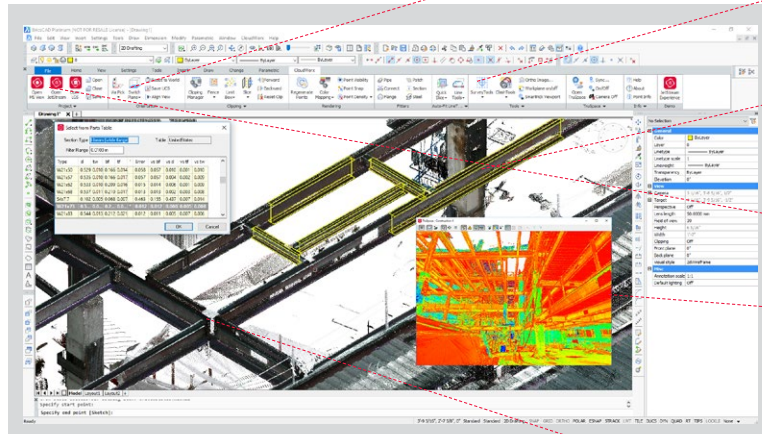
# Amplifying the BricsCAD experience

Floor Flatness/Floor levelness tool guides users through the process of quickly querying a region using built-in templates and generating a report to ASTM standards, ready for delivery to a client.



## Leica CloudWorx for BricsCAD

Key features



- Intuitive toolset for UCS orientation support automatically orientate UCS to walls and floors

- Automatic Linework Assist saves users time in linework creation

- Advanced point cloud modelling beyond the BricsCAD tool kit: Steel and Pipe Fitter, quick slice

- Multiple point cloud sources: Cyclone, JetStream Server and LGS universal project files

- Full support for TruSpace

- Layers: RGB, HDR, Hue Intensity, Greyscale and IR
- Drive CAD viewpoint
- Send picks from TruSpace to CAD
- Quick limit box

- Clash tools quickly identify deviations between as-built and design intention

### RECOMMENDED SPECIFICATIONS

<b>Processor</b>	2 GHz Dual Quad Core i7 processor or better
<b>RAM</b>	Minimum 8 GB or more for 64-bit OS
<b>Graphics card</b>	Nvidia - Quadro or GeForce 1 GB (with OpenGL support, versions 3.2 or higher)
<b>Operating system</b>	Microsoft Microsoft, Windows® 7-8-10 (64 bit supported)
<b>Hard disk</b>	1 GB free disk space
<b>Compatibility</b>	CloudWorx for BricsCAD is compatible with Leica Cyclone 6.2 and newer, JetStream 1.5 and newer and BricsCAD v18 and newer

\*Publishing LGS files requires Cyclone PUBLISHER Pro License.

\*Reference the Leica Cyclone & CloudWorx Technical Specifications document for a complete listing for product specifications

Microsoft, Windows® and the Windows logo are either registered trademarks or trademarks of Microsoft Corporation in the United States and / or other countries.

Copyright Leica Geosystems AG, 9435 Heerbrugg, Switzerland. All rights reserved. Printed in Switzerland - 2018.  
Leica Geosystems AG is part of Hexagon AB. 876065enus - 08.18

**Leica Geosystems AG**  
Heinrich-Wild-Strasse  
9435 Heerbrugg, Switzerland  
+41 71 727 31 31

- when it has to be **right**

**Leica**  
Geosystems